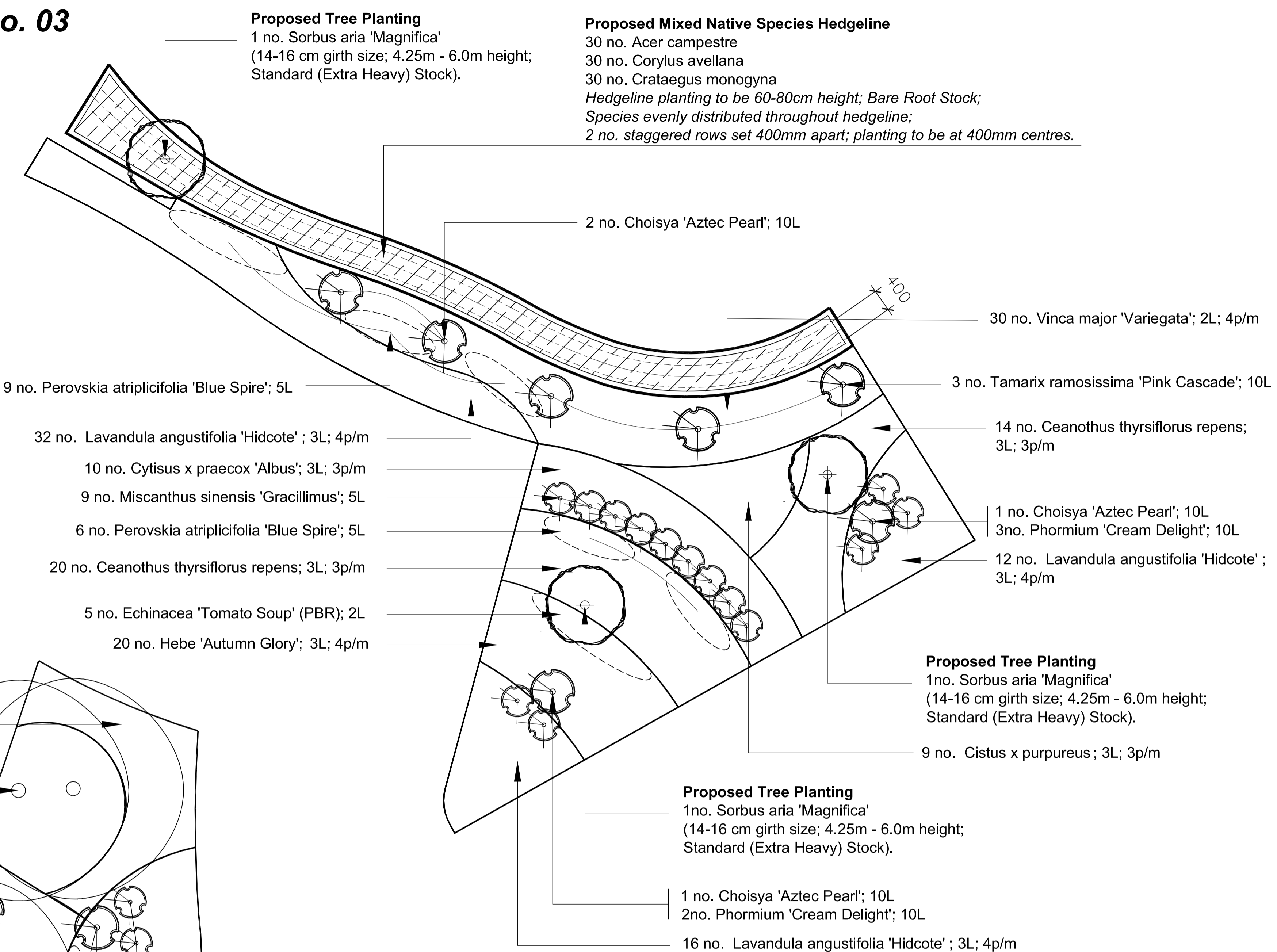
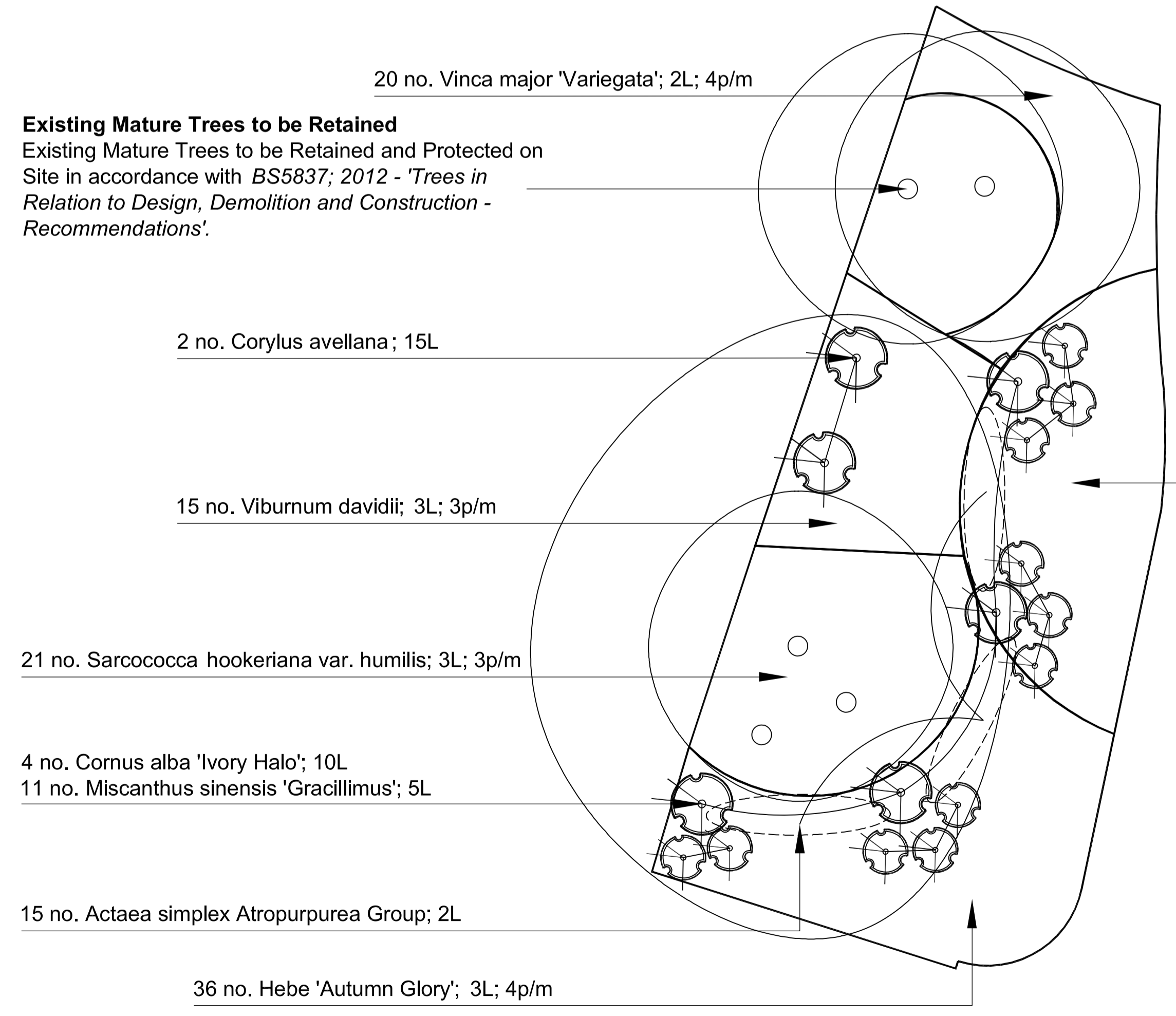


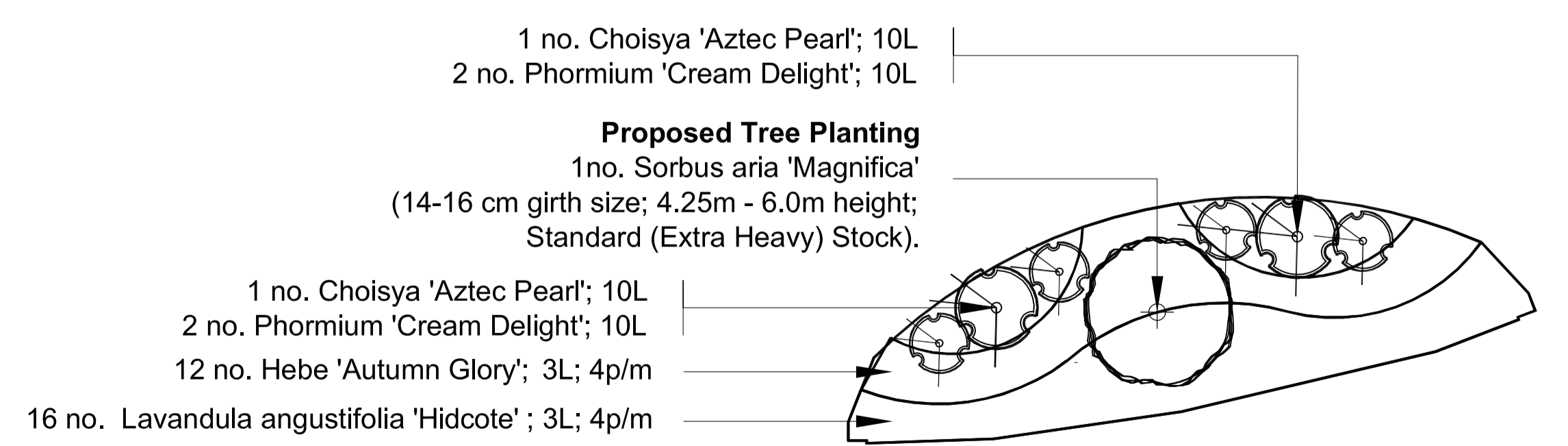
Planting Area No. 03



Planting Area No. 01



Planting Area No. 02



Legend

Proposed Native Specimen Tree Planting
(14 - 16 cm girth size; Standard Extra Heavy;
4.25 - 6.0m height)

Proposed Ornamental Specimen Tree Planting
(14 - 16 cm girth size; Standard Extra Heavy;
4.25 - 6.0m height)

Proposed Ornamental Specimen Tree Planting
(10-12 cm girth size; 3.0m - 3.5m height;
Standard Stock).

Specimen and Accent Planting

Shrub / Groundcover Planting Areas
Planting Areas to be a minimum of 300 mm
depth of subsoil overlain with a minimum of
450 mm depth of Multi-Purpose Topsoil to
BS:3882:2015. Topsoil to be tested and
certified by a Soil Scientist in accordance
with the imported topsoil specification.

Herbaceous / Bulb Planting
Herbaceous and Bulb Planting Areas

Proposed Mixed Native Species Hedgeline
Proposed Mixed Native Species Hedgeline planting.
Hedgeline planting to be 60-80cm height; 2 no.
staggered rows set 400mm apart; planting to be at
400mm centres.

Proposed Ornamental Species Hedgeline
Proposed Ornamental Species Hedgeline planting.
Hedgeline planting to be 60-80cm height; 2 no.
staggered rows set 400mm apart; planting to be at
400mm centres.

Planting Areas / Mulching
All proposed shrub planting areas to be overlain with 75mm depth Ornamental Bark Mulch.
Planting areas to be mulched with free graded ornamental bark mulch; 5 - 30mm nominal
particle size; BS4970:1987.

Tree Pit Tree Planting

Tree Pits

- Sizes:
 - (10-12 cm girth size; 3.0m - 3.5m height;
 - Standard Stock); and
 - 14 - 16cm Girth; 4.25 - 6.0m height (Standard Extra Heavy) ;
- Tree Pit Size: 1800 mm diameter x 750 mm depth.
- **Backfilling Material**
- Composition: Previously prepared mixture of topsoil excavated
from pit and additional topsoil as required, together with:
- Ameliorant / Conditioner: 20 % by volume, together with 20 %
volume Free Planting Compost (8 mm peat free organic
compost supplied by Bourne Arable, Newenden, Cranbrook,
Kent, TN18 5QG. Tel: 01797 252298; Fax: 01797 253115.
Email: enquiries@bourne.co.uk, or equal and approved; and
- 2500 grams of Steanure Soil Builder per tree planting pit.
- To be supplied by Alginate Products, Stone Hill, Egerton,
Aldford, Kent, TN27 5DU. Tel: 01223 756241; Fax: 01223
756419 or equal and approved.

All staked trees:

- Ties: Adjustable ties.
- Tying: Secure trees firmly but not rigidly with a single tie centrally on
trunk for long double staking.
- Advanced Nursery Stock (Standard Extra Heavy). Trees to be long
double staked: 2 no. 3000 x 75 mm diameter timber stakes driven
vertically into the ground to finish 300mm below base of pit. 2 no. per
tree.
- Stakes to be cut level at 1000mm height and braced with timber
crossbar.

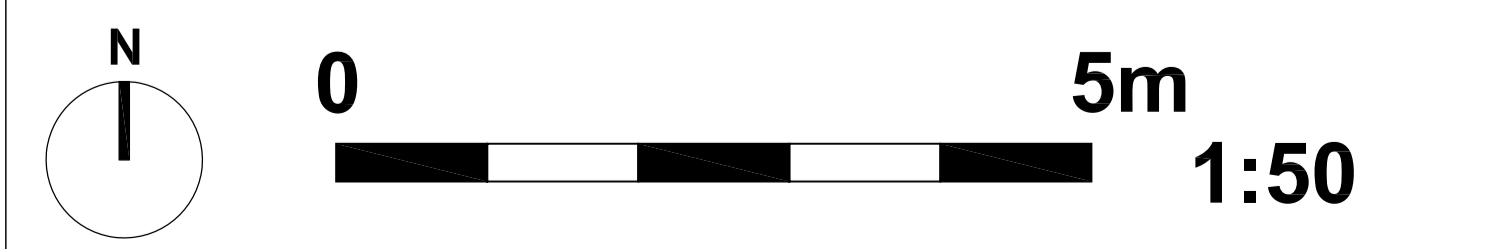
Detailed Planting Plans / Specification
(Refer to Drawings LLD954 Soft Landscape Layout and LLD954 Detailed Planting Schedule
and Specifications)

Rev	Description	Date	Initials
00	Planning Issue	07.07.16	KM

Lizard Landscape Design

Lizard Landscape Design and Ecology
34 South Street
Tarring
Worthing
West Sussex
BN14 7LH
Tel. 01903 216033
Email: lizard.landscape@btconnect.com

Project title	
Meridian Primary School Peacehaven, East Sussex	
Drawing title	
Detailed Planting Plan (Drawing 1 of 4)	
Scale	Drawn Date
1:50@A1	KM 30.06.16
Approved	
Drawing No	Revision
LLD954 / 04 - 01	00
CAD Filename	
LLD954/ CAD Drawings	



Detailed Planting Plan
Meridian Community Primary School, Peacehaven